

State of Wyoming Corner Record

(In compliance with the CORNER PERPETUATION AND FILING ACT, Wyoming Statutes, 1977, Section 36-11-101, et. seq., and the Rules and Regulations of the Board of Registration for Professional Engineers and Professional Land Surveyors)

Reverse side of this form may be used if more space is needed.

Record of original survey and citation of source of historical information (if corner is lost or obliterated). Description of corner monumentation evidence found and/or monument and accessories established to perpetuate the location of this corner. Sketch of relative location of monument, accessories, and reference points with course and distance to adjacent corner(s) (if determined in this survey). Method and rationale for reestablishment of lost or obliterated corner.

NO EVIDENCE FOUND.

Set 3 1/4" aluminum cap on #5 rebar 24" long. Corner sets 8" below road surface.

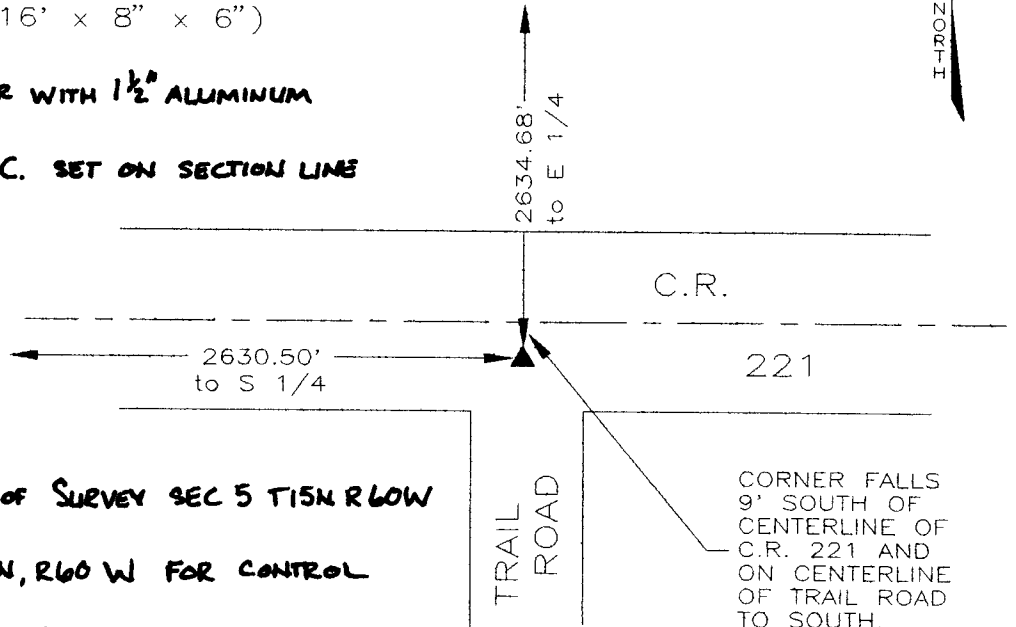
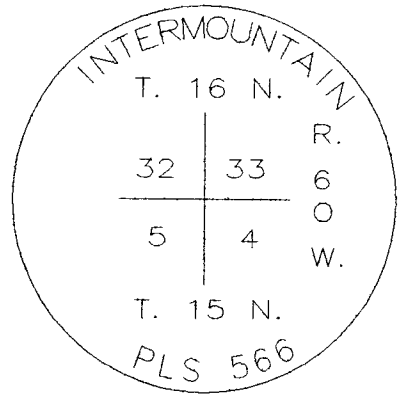
No reference points set.

GLO Record: Granite Boulder (16' x 8" x 6")

SET 5/8" x 24" REBAR WITH 1 1/2" ALUMINUM

CAP STAMPED W.C. SET ON SECTION LINE

40' NORTH



NOTE: SEE RECORDS OF SURVEY SEC 5 T15N R60W AND SEC 32, T16N, R60 W FOR CONTROL USED AND ADDITIONAL INFORMATION

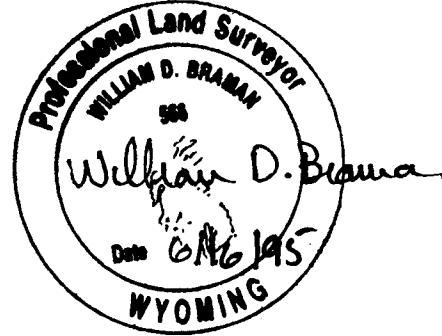
Date of Field Work: JUNE 29, 1994 Office Reference: 2747

CROSS INDEX DIAGRAM

1	2	3	4	5	6	7	8	9	10	11	12	13	14	15	16	17	18	19	20	21	22	23	24	25	
A																									
B																									
C	6																								
D		5																							
E			4																						
F				3																					
G					2																				
H						1																			
I																									
J																									
K																									
L	18																								
M		17																							
N			16																						
O				15																					
P					14																				
Q						13																			
R																									
S																									
T																									
U																									
V																									
W																									
X																									
Y																									
Z																									
	1	2	3	4	5	6	7	8	9	10	11	12	13	14	15	16	17	18	19	20	21	22	23	24	25

Firm/Agency, Address
 INTERMOUNTAIN PROFESSIONAL SERVICES, INC.
 5801 OSAGE AVENUE
 CHEYENNE WY 82001
 Telephone Number: (307) 632-3138

This corner record was prepared by me or under my direction and supervision.
 SEAL & SIGNATURE



Corner Name: SEC COR 32/33 Section: T15N R60W 6 P.M. Cross-Index No.: A-9
5/4 16N 60W 6 Z-9